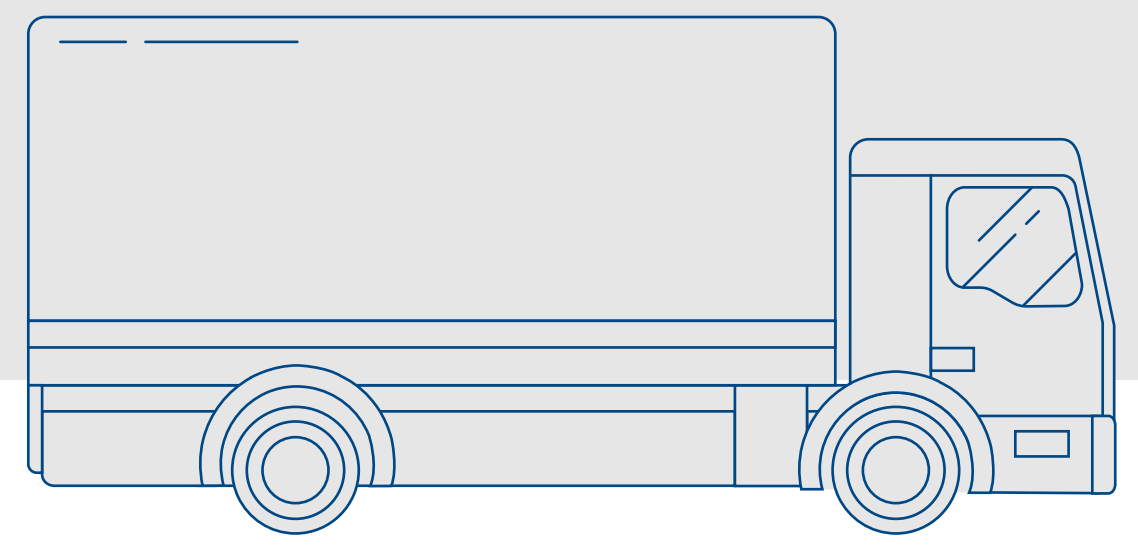
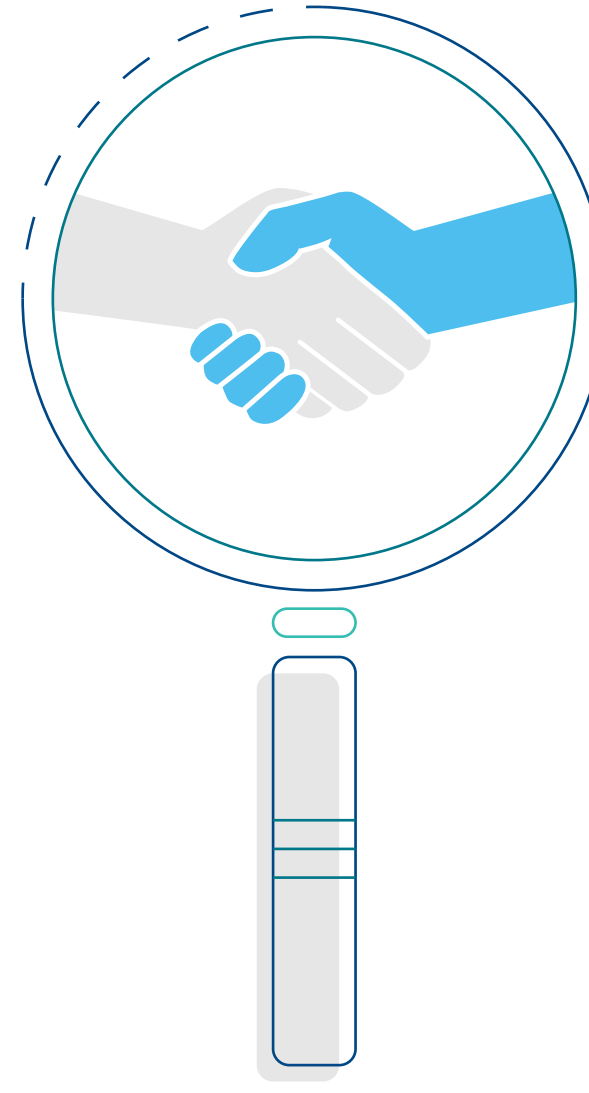
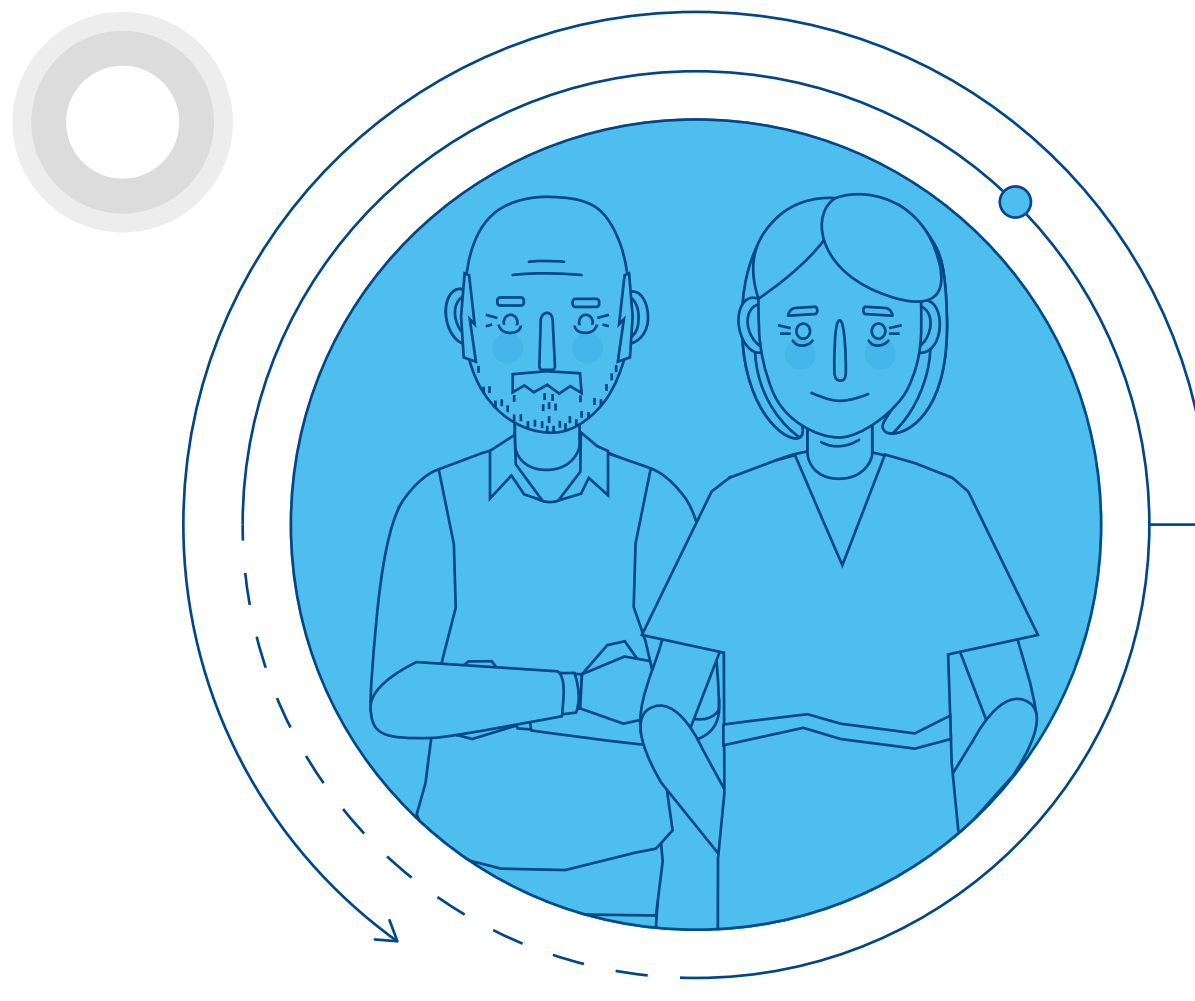




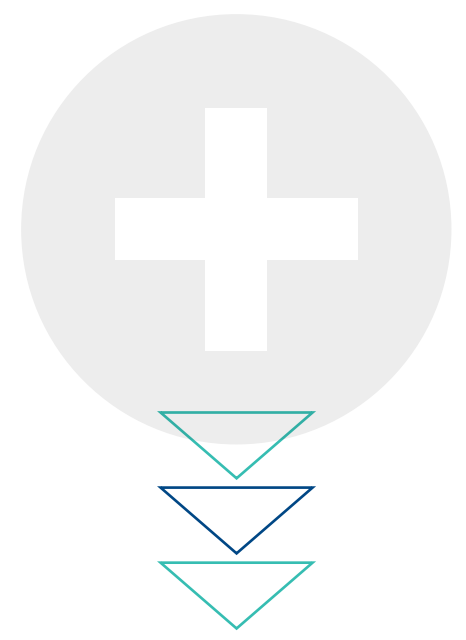
During the global pandemic NES has continued to support a skilled and sustainable health and care workforce



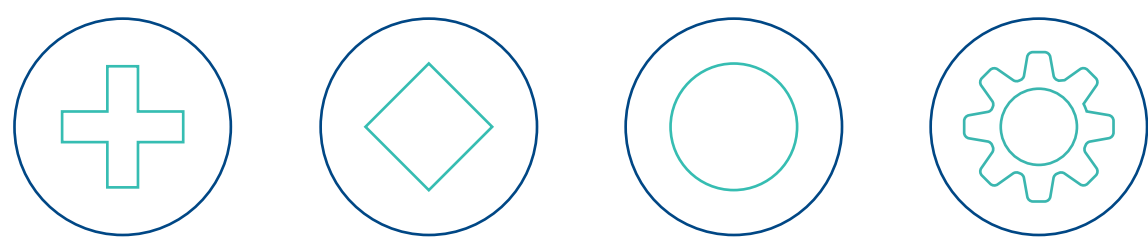
We have delivered over **900,000** parcels to vulnerable people



Carried out **31,000** checks on NHS returners and students through the pandemic



Worked to advise care homes on effective protection measures

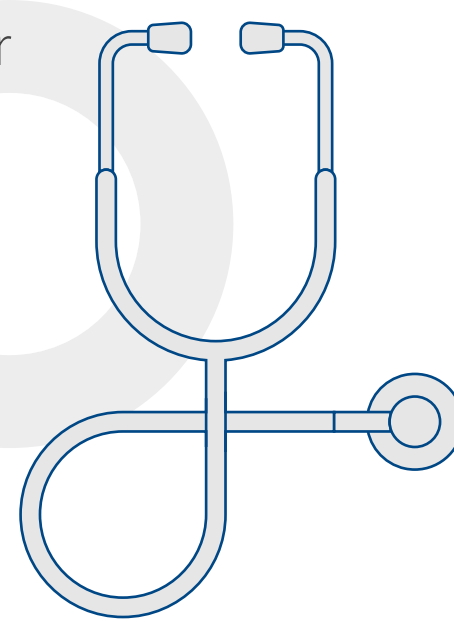


Provided important resources for mental health

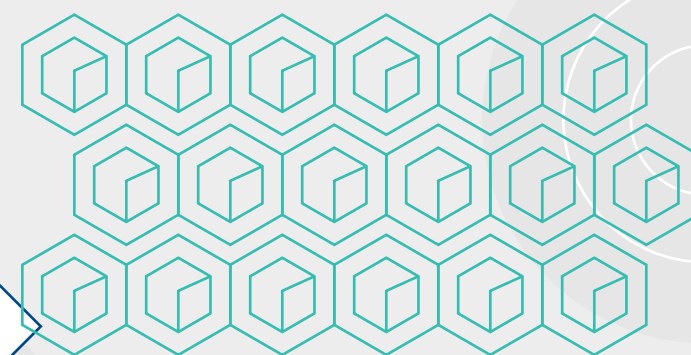
Carried out **39** educational webinars for over **15,000** Allied Health Professionals



Redeveloped training programmes for **6,000** medical trainees



Shared essential materials, generating **8,500,000** hits on Turas Learn



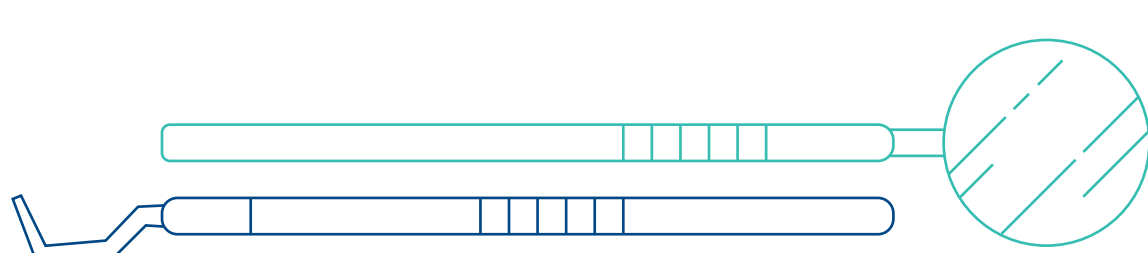
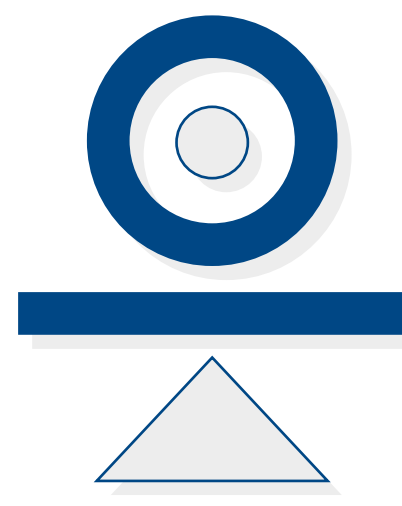
Created the new **NHS Data Intelligence Team** for better workforce planning

Hosted **670,000** visits to the NHS careers website

Recruited **200** Pre-Registration trainees for a well-trained pharmacist workforce



Balanced a **£552m** budget including **£375m** of direct educational costs



During **2020** the dental directorate hosted over **900** educational events, delivered to nearly **32,000**



Supported nearly **8,000** postgraduate education placements across

MEDICAL	DENTAL
PSYCHOLOGY	PHARMACY
OPTOMETRY	CLINICAL SCIENCE